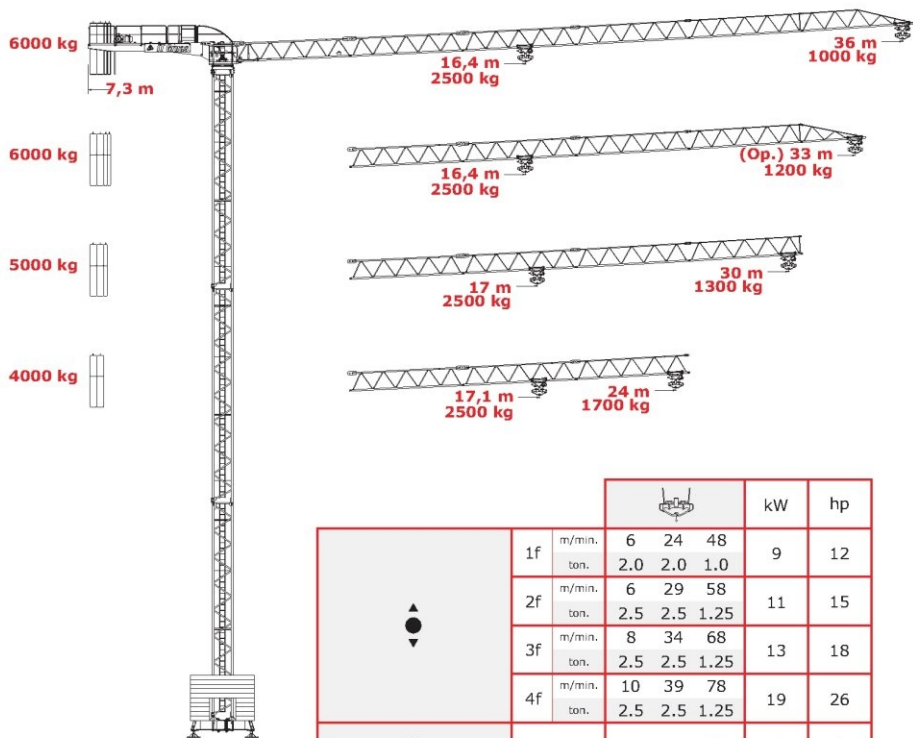








Grua Torre

Tower Crane

IT36f



					kW	hp	
	1f	m/min.	6	24	48	9	12
		ton.	2.0	2.0	1.0		
	2f	m/min.	6	29	58	11	15
		ton.	2.5	2.5	1.25		
	3f	m/min.	8	34	68	13	18
		ton.	2.5	2.5	1.25		
	4f	m/min.	10	39	78	19	26
		ton.	2.5	2.5	1.25		
	m/min.	20	38	58	3	4	
	rpm	1,07			3	4	
CEI 38		IEC 38	kVA				
400V (+6% -10%) 50Hz		1f - 19 kVA	3f - 24 kVA	2000 / 14 / CE			
		2f - 21 kVA	4f - 31 kVA				

Flat-Top